



# MONTHLY MEMBERSHIP PROGRESS REPORT

District 4 L1

Results as of: 05/31/2019

GMT: HOWARD HUDSON

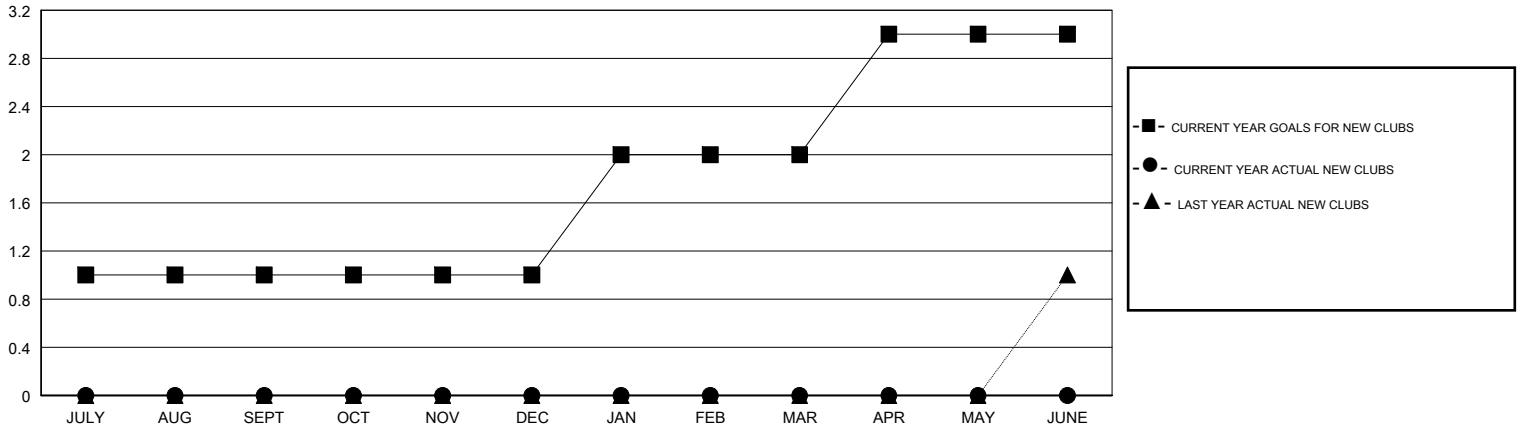
LOCATION CALIFORNIA

GMT CA

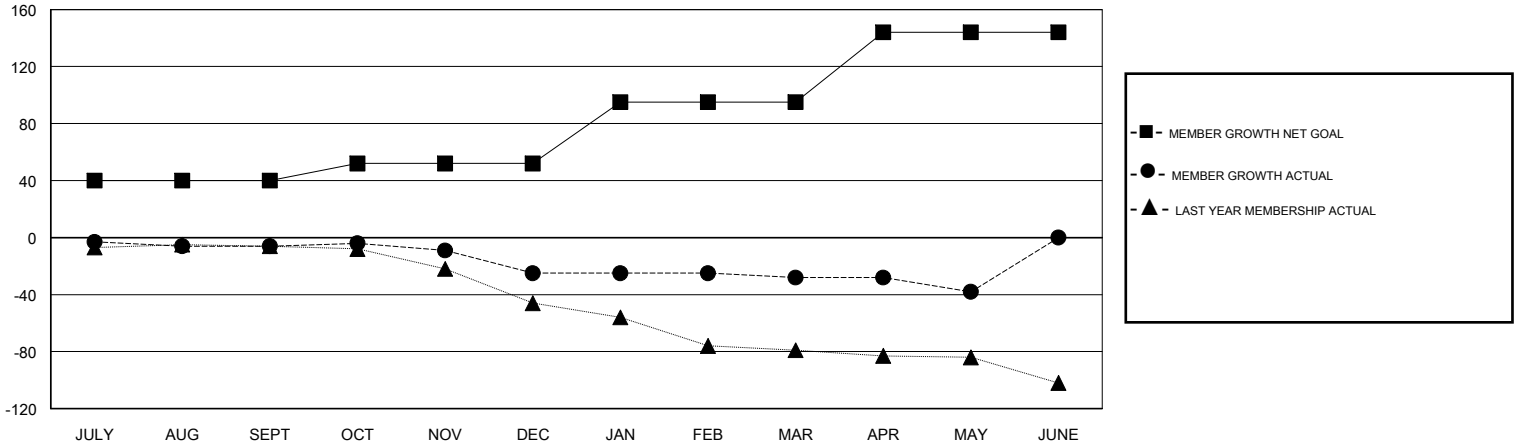
Clubs			
RESULTS FOR 2018-2019			
QUARTER	NEW CLUB GOAL	NEW CLUBS	DROPPED CLUBS
JULY/AUG/SEPT	1	0	1
OCT/NOV/DEC	0	0	0
JAN/FEB/MAR	1	0	0
APR/MAY/JUNE	1	0	0

Members			
RESULTS FOR 2018-2019			
QUARTER	MEMBER GROWTH NET GOAL	MEMBER GROWTH ACTUAL	DROPPED MEMBERS ACTUAL (including transfers)
JULY/AUG/SEPT	40	14	18
OCT/NOV/DEC	12	15	31
JAN/FEB/MAR	43	9	14
APR/MAY/JUNE	49	7	16

GOALS AND ACTUAL NEW CLUBS CUMULATIVE



GOALS AND ACTUAL MEMBERS CUMULATIVE



DROPPED CLUBS: 1	14 CLUBS OF 33 ADDED 1 OR MORE NEW MEMBERS	<u>GENDER DISTRIBUTION</u> MALE 391 (59.06%) FEMALE 271 (40.94%) Women Percentage Fiscal Year Goal: 46%
<u>DROPPED MEMBERS</u> DECEASED 4 CLUB CANCELLED 0 OTHER 71 TOTAL 75	<a href="#">CLICK HERE FOR CUMULATIVE MEMBERSHIP DATA</a>	TOTAL FAMILY UNIT MEMBERS 136 FAMILY MEMBERS PAYING HALF DUES 70